

CADD PUMPS



The CADD pump is a small, portable computerized device. It gives your child IV medications through their PICC. The CADD allows your child to get antibiotic medication safely, at home. The pump will be programmed by the Calea pharmacy. It will give your child's antibiotics at pre-set times.

The PIVOT Nurse will explain how to use the pump before you go home. They will make sure you understand how it works. It is important to only perform those procedures you have been taught. You should feel confident about using the pump before you agree to have antibiotics this way. The following information is given to assist you with learning and act as a reference once you are at home.

How does the CADD pump work?

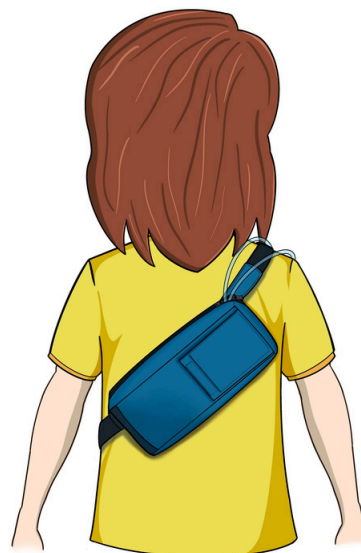
The pump is attached to a medication bag that holds the antibiotics. The pump and medication bag go in a bag or pouch. Your child will be connected to the CADD pump 24 hours a day for the duration of their treatment.

Your child can wear the bag or pouch over their shoulder or around their waist. This depends on how heavy the bag is. Please ask a PIVOT Nurse about how to wear the bag or pouch.

The pharmacy will program the pump to give the antibiotics at the pre-set times. The pump will give the dose that your child's doctor prescribed.

Every 24 hours, your child must have a new medication bag. When you change the medication bag, you must also reset the reservoir volume on the pump. A nurse from the PIVOT Clinic or Vascular Access Team will teach you how to do this.

The pump uses 4 AA batteries. Calea Pharmacy will provide you with the batteries. You must change the batteries every two to three days. A PIVOT nurse will teach you how to do this.



Going home with the CADD pump

Before you leave the hospital, the PIVOT Clinic will make weekly follow-up appointments in your community. Your child must attend these appointments. A nurse will replace the tubing and check that the pump is working.

If there are problems with the pump, contact the PIVOT team, Vascular Access Team or the Calea Pharmacy. (See “Contact information,” pg. 31, for phone numbers and hours). If it is after hours, turn off the pump and contact the PIVOT Clinic or the Vascular Access Team in the morning (See “After-hours planning,” pg. 33).

Do not disconnect the tubing yourself, unless you have been taught to heparin lock your child.

Using the CADD pump

When your child starts using the CADD pump, they will need to make some minor adjustments to their activities.

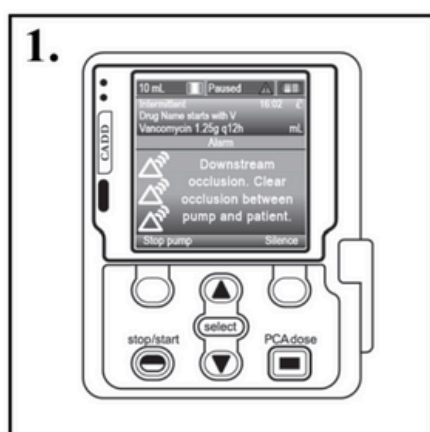
- When your child is bathing, put the pump on a stool or chair next to the bath or shower. It should not get wet, as water can damage the pump.
 - When your child is in bed, the pump can go beside them or on a chair next to the bed. If your child is under 3 years old, please refer to “Play and sleep safety” on page 3.
 - Your child must not play contact sports while they have a PICC. Contact sports include activities where people could bump into one another, like soccer or hockey.
 - If you have animals at home, keep the CADD pump and tubing out of their reach at all times.
 - Be careful with your PICC and make sure it does not get pulled or damaged.
-

How will I know the CADD pump is working?

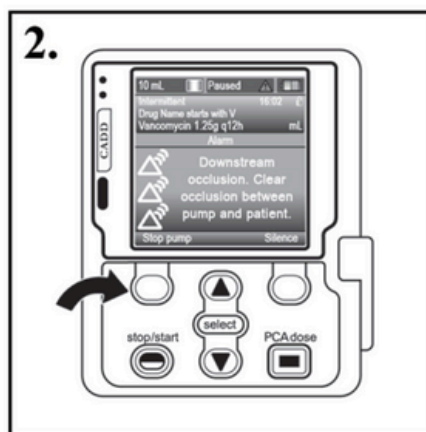
1. On the top of the CADD pump screen there should be a green message that says "Running." If this is red and says "Stopped" then the pump is not running.
2. Your child has an intermittent infusion. This means that the pump will give medicine, then stop, then start again. You can see when the next infusion will start. For example, the screen might say "Delayed start - Infusion starts in 4 hours."
3. During the infusion, you will hear a whirring sound that stops and starts. This sound means the pump is working.
4. The amount of fluid in the medication bag should go down slowly. You can also see how much medication is left in the bag, in the top left of the screen. If your child has an intermittent infusion, this number will only change during the infusion.

Dealing with CADD problems

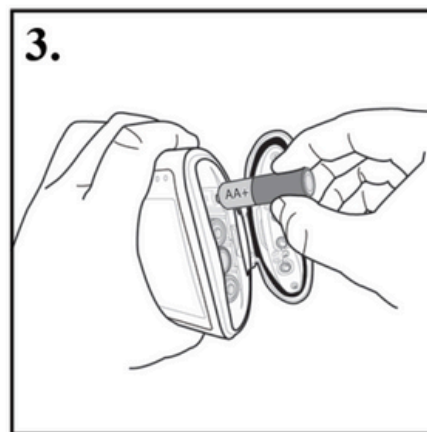
OPTION 1: Turn Off Alarm/Stop Infusion



- Alarm occurs



- Press 'Stop Pump'

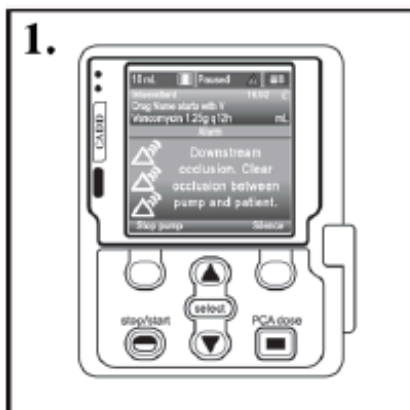


Power down pump:

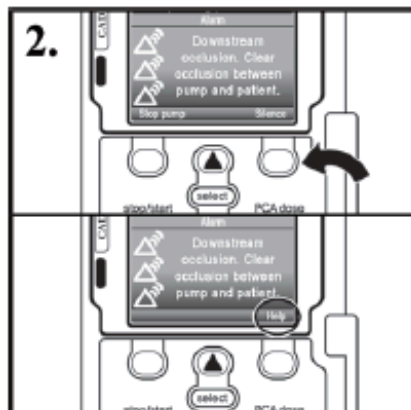
- Pump will be stopped
 - Remove batteries
 - Call health unit
-

Dealing with CADD problems

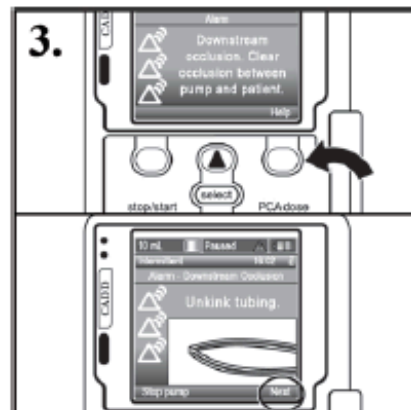
OPTION 2: Solve Alarm/Continue Infusion



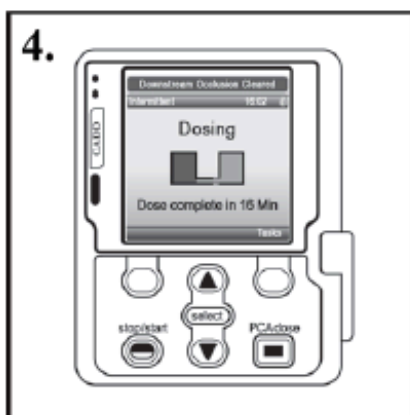
- Alarm occurs



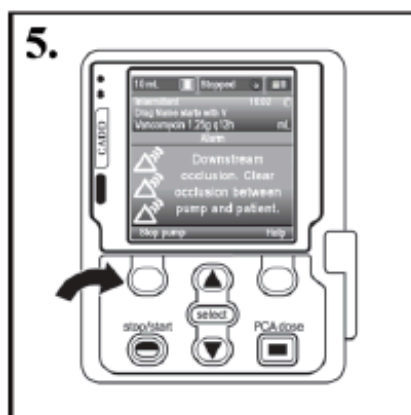
- Press 'Silence'
- Silence becomes 'Help'



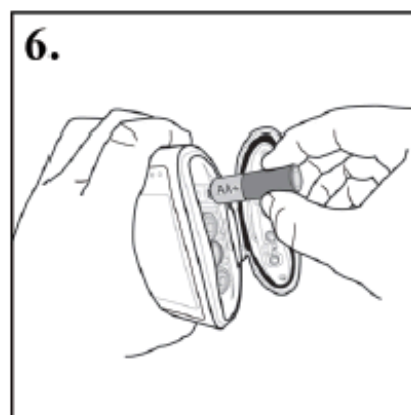
- Press 'Help' button
- Help becomes 'Next'
- Keep pressing 'Next' to get to help screens.
- Try to solve problem (eg. kink, move arm, clamp)



- If blockage is fixed, pump will start running again



- If unable to fix, press 'Stop pump'



- Power down pump:**
- Pump will be stopped
 - Remove batteries
 - Call health unit

Dealing with CADD problems

If there is air in the line, this is an emergency.

1. Clamp the line.
2. Turn off the pump. **DO NOT** follow instructions to prime the tubing.
3. Call for help. During the day, call the PIVOT Nurse. After hours, call the Vascular Access Team. Tell them what happened.

You will need to go to the hospital so that a nurse can fix this problem. A trained nurse must assess the line. You must not resolve this problem at home.

